



# *BESTEVÆR<sup>®</sup>*

*“Tranquilo”*



**Builder:** K&M Yachtbuilders  
**Design:** Gerard Dijkstra & Partners  
**Type:** Bestevaer 56ST

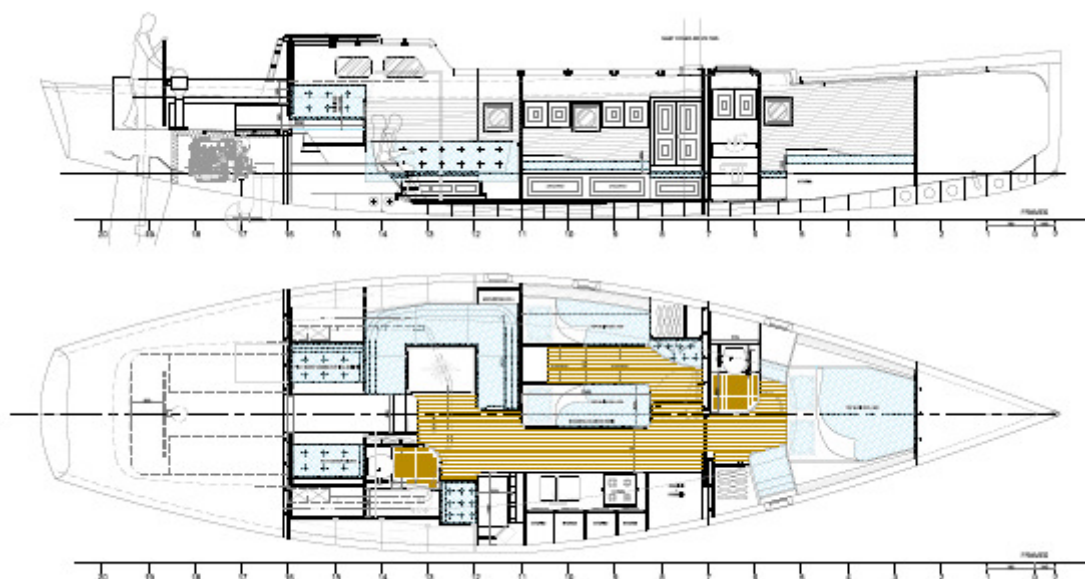
#### Principal dimensions

Length overall:	17,58 m
Length over deck:	17,23 m
Length waterline:	15,37 m
Beam overall:	4,64 m
Beam waterline:	4,08 m
Draft:	1,80/ 3,50 m (lifting keel)
Displacement:	± 22 tons
Water ballast:	2000 kg
Air draft:	23,1 m
Motor:	Volvo Penta D3 110 hp 82 kW
Hull:	aluminium
Bowthruster:	Max Power 255 mm
Emergency generator:	Honda 2 kW
Water maker:	New Port 1000 + Z-brane (150 l/hr)
Heating:	Webasto central (water) heating
Water:	4 x 125 l
Fuel:	2 x 550 l + 100 l (daytank)
Grey and black water:	2 x 120 l + 90 l
Power system:	12 V DC/ 24 V DC/ 240 V AC
Instruments:	Raymarine ST290 (wireless control)
Communication:	SSB, Mari phone, VHF, internet, email, voice by fleet 33
Deck gear:	full stainless steel custom built by K&M
Winches:	Lewmar (4 electric and 6 manual)
Rig:	Hall Spars & Rigging; carbon mast with 3 spreaders topped, Park Avenue boom
Sails:	North Sails 3DL
Sail area to windward:	150 m <sup>2</sup>
Sail area when running:	280 m <sup>2</sup>
Starting price:	€ 950.000,00 (ex. VAT)

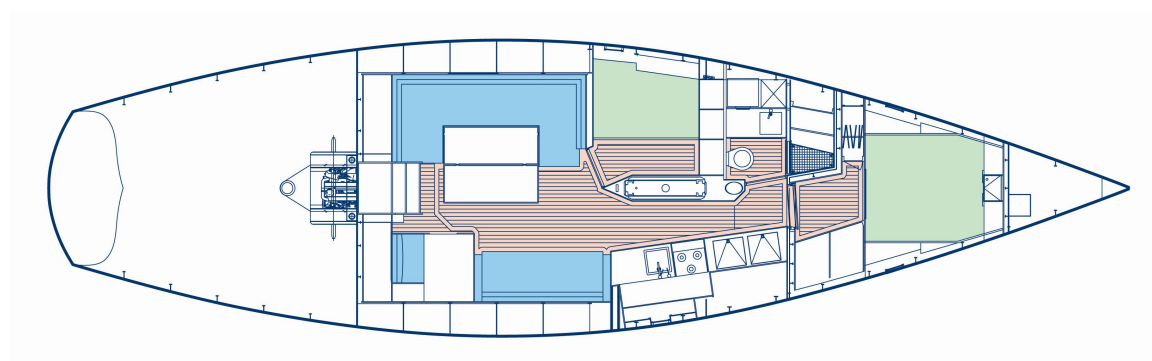
*According to the designer, this yacht is to be classified as 'Spirit of Tradition', being traditionally styled but showing powerful performance characteristics such as a fine entry, shallow canoe body, lift keel and a balanced spade rudder.*

*The customer opted for a Bestevaer after a sea trial with Bestevaer 53 ST 'Alice'. According to him, the yacht performed extremely well. He was looking for a fast yacht that he would be able to handle single-handedly. He chose K&M Yachtbuilders because of their short lead-time, the excellent references regarding hull construction and because of the architect's recommendation the Tranquilo's interiors are very functional, smooth and state-of-the-art - a different and special interior design in the yacht building industry! The exterior appearance is classic, with a flush deck and a teak-cladded pilothouse. This customer understandably emphasized safety issues in his list of requirements. A few particulars: Hall Spars carbon mast and carbon Park Avenue boom, North Sails 3DL sails, one-line reefing system, water ballast tanks and a lift keel.*

## Interior plan



## Alternative interior plan





## Photographic Impression





